

# PORTSIDE VS. FAIRWAY HARBOR

## Role cards

Work in groups. Read your role card and use resources to learn more about this perspective in this scenario.



### **PORTSIDE HOMEOWNERS:**

Residents living in the community of the proposed golf resort site express worries about the potential environmental impact, particularly regarding water quality due to excessive phosphorus runoff. They fear disruptions to their way of life and the degradation of their community's natural beauty. They do enjoy manicured lawns and gardens. Many of these citizens are avid pet owners.



### **TOWN COUNCIL MEMBERS:**

Elected officials face the challenging task of balancing economic development with environmental protection. They must navigate conflicting interests, listen to citizen concerns, and make decisions that benefit the community as a whole.



### **SOIL & WATER CONSERVATION:**

Environmental agencies provide expertise on the potential ecological impacts of the golf resort project. They conduct studies, offer recommendations for mitigating harm, and ensure compliance with environmental regulations.



### **SMALL BUSINESS OWNERS:**

Local entrepreneurs voice diverse opinions on the proposed golf resort's impact on the community. While some see it as an opportunity for increased tourism and economic growth, others worry about potential disruptions to existing businesses and ecosystems.

# PORTSIDE VS. FAIRWAY HARBOR

## Role cards

Work in groups. Read your role card and use resources to learn more about this perspective in this scenario.



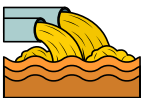
### **AUDUBON BIRD GROUP:**

Individuals passionate about environmental conservation rally fellow citizens to oppose the golf resort's construction. They organize protests, create awareness campaigns, and advocate for sustainable development practices to protect local ecosystems. They are concerned about conserving nesting sites for local bird species as well as the habitats that are used by migratory species.



### **FARMERS:**

Farmers in the vicinity of the proposed golf resort raise concerns about the potential impact on their livelihoods. They worry about increased competition for water resources and potential contamination of soil and crops due to phosphorus runoff. Some express fears of encroachment on farmland and loss of agricultural space and subjection to strict regulations on the farm. They follow best practices for soil and water quality.



### **WASTEWATER TREATMENT OPERATORS:**

Operators of wastewater treatment facilities in the community are tasked with ensuring compliance with environmental regulations and maintaining water quality standards. They assess the potential impact of the golf resort's development on local water systems and may express concerns about increased demand on treatment infrastructure and potential contamination risks.



### **LOCAL SCIENTISTS:**

Environmental experts study the potential impacts of the golf resort on the surrounding ecosystem, particularly in relation to phosphorus runoff and water quality. They provide data-driven insights to inform decision-making and recommend strategies for minimizing ecological harm.

# PORTSIDE VS. FAIRWAY HARBOR

## Role cards

Work in groups. Read your role card and use resources to learn more about this perspective in this scenario.



### **OWNERS/INVESTORS OF FAIRWAY HARBOR:**

Financial backers of the golf resort project seek a return on their investment. They may pressure developers to prioritize profitability over environmental concerns, or conversely, support environmentally responsible development practices to mitigate risks and maintain public goodwill.



### **DEVELOPERS/LANDSCAPERS OF FAIRWAY HARBOR:**

The developers of the golf resort propose plans that promise economic benefits for the community, including job creation, increased property values, and revenue from tourism. They may also offer commitments to environmental sustainability to address citizen concerns. They want to include a lake, trail system, ball fields, dog parks, etc.



### **MODERATORS:**

The moderator's role is to lead the town hall meeting in an orderly manner by: Setting the agenda; Managing speaking turns; Encouraging participation; Enforcing rules of conduct; Keeping time; Summarizing key points; and Remaining neutral.